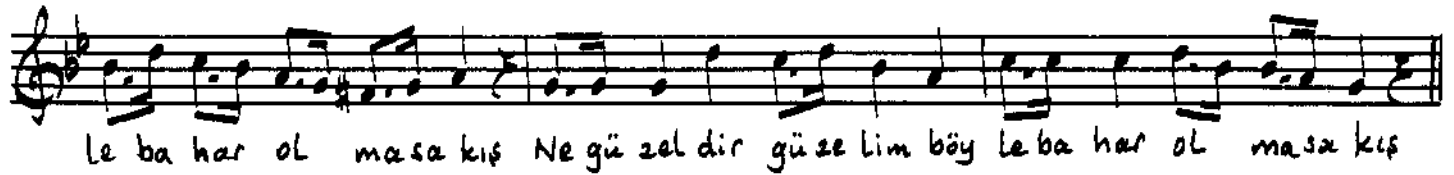
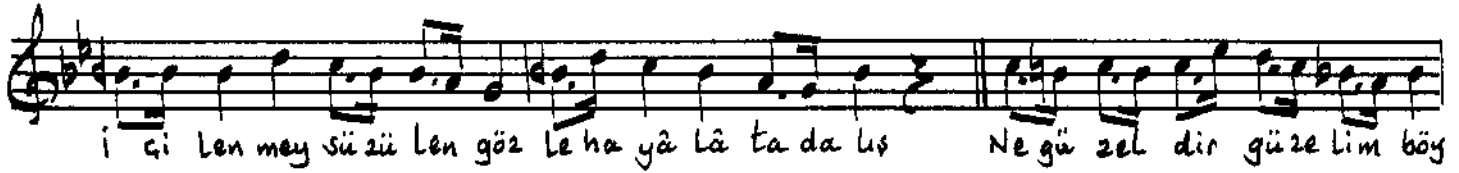
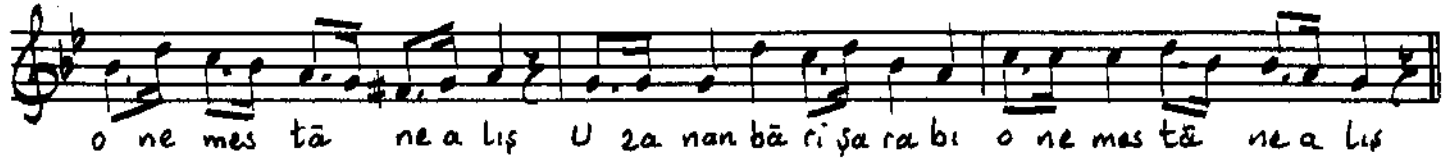
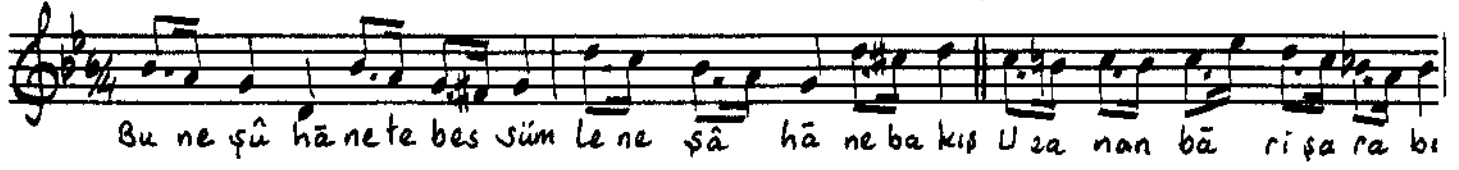


NIHÂVEND ŞARKI

24öl = Senginsemâi

Beste: Muallim İsmâil Hakkı B.
Güfte: Cüneyd B.



Bu ne şûhâne tebessümle ne şâhâne bakış
Uzanan bâr-i şarâbî o ne mestâne alış
İçilen mey süzülen göze hayâlâta dalış
Ne güzeldir güzelim böyle bahâr olmasa kış